

Nationals 3 Year Warranty Statement

Our 'No quibble' clutch guarantee' covers any material or manufacturing defects for passenger cars and light commercial vehicles.

Signs of abnormal operating conditions or fitting faults are excluded. To assist your returns department with a diagnosis, we have provided images of excluded claim types below.

Damaged drive plate hub

Symptoms:

Unable to select gears.

The severe damage to the drive plates (shown in photo 1 & 2) would have been caused by failure to align the plate to the gearbox input shaft during fitment. The gearbox input shaft has been forced into the hub which has caused the damage. In most cases, the forced imprint of the input shaft is visible on the hardened & tempered hub teeth.

Causes:

- Splines on the input shaft have not cleanly entered the hub spline
- Splines have not entered the hub, but the gearbox has been 'pulled up' to the engine

Recommendations:

Use a clutch alignment tool to centre the drive plate.

Always use a gearbox lift during installation. Rotate the drive shaft flange (not the box) to align the splines.

Ensure the gearbox is fully mated to the engine before starting the tightening sequence.

Never use impact tools or longer bolts to overcome resistance during fitting.

Further advice available:

Nationals technical service bulletin 014 - Align hub and gearbox weight



Photo 1

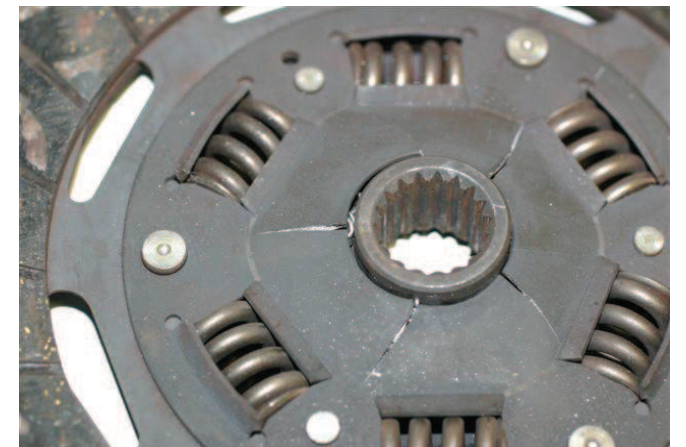


Photo 2