

Nationals 3 Year Warranty Statement

Our 'No quibble' clutch guarantee' covers any material or manufacturing defects for passenger cars and light commercial vehicles.

Signs of abnormal operating conditions or fitting faults are excluded. To assist your returns department with a diagnosis, we have provided images of excluded claim types below.

Damaged plates due to worn/failing dual mass flywheels (DMF)

Symptoms:

Our warranty department has received a number of damaged clutch kits with typical wear patterns associated from their use with a faulty dual mass flywheel (DMF).

A failing DMF will result in rapid wear to the rigid style drive plate, and eventually result in the premature failure of the clutch kit.

The two most common signs the DMF may need replacing is the friction fin segments shearing from the backplate (see photo 1) or that the spline teeth wear out in a very short period of time (see photo 2).

Causes:

- Worn or failing dual mass flywheels (DMF)

Recommendations:

Always check for condition of the dual mass flywheel when replacing the clutch, and replace as necessary.

Further advice available:

Nationals technical service bulletin 003 - DMF resulting in failed plates.

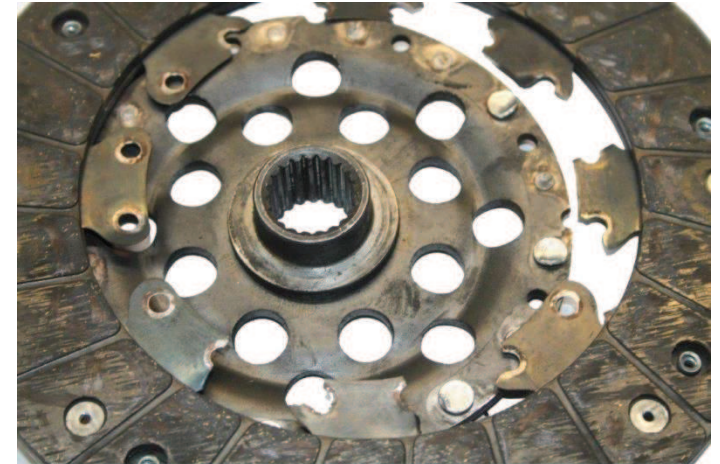


Photo 1



oto 1